

148 × 2 10mm

USB Type WI-FI Remote Control

Specification:

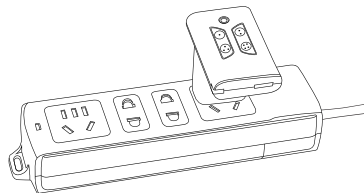
- (1) Working Voltage: Micro USB 5v
- (2) Working current: 30-80mA
- (3) Wi-Fi: 2.4G IEEE 802.11 b/g/n
- (4) RF Frequency: 433.92MHz
- (5) Compatibility: Fixed code with 433.92Mhz/
Giant Rolling Code for Giant Auto gate system
- (6) RF Distance: outdoor 80M in open area

Operation Instruction:

1. Search for "XHouse IOT" to download the APP from Google play or App Store



FOR Android & IOS



- Or scan this QR code for download APP "XHouse IOT"
- Install the "XHouse IOT" APP
- Register the account for "XHouse IOT" and log in

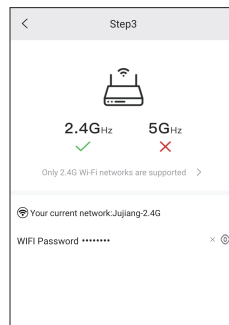
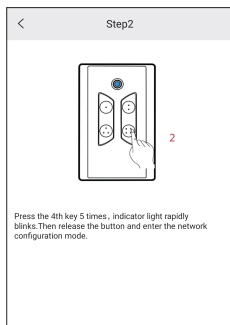
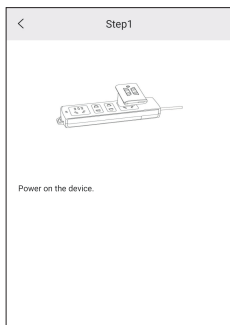
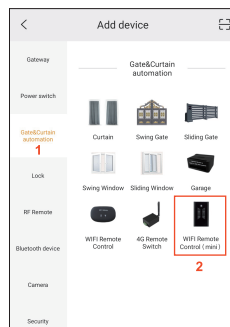
NOTE: We strongly recommend all the users to register with the email to have a more convenient registration.

2、Adding the device in APP

(1) Press the "+" on the top right corner to add the device, then select Gate&Curtain automation, then select "Wi-Fi Remote Control(mini)" :

(2) Network configuration:

(Make sure the network is 2.4GHz Wi-Fi only); Press and release the 4th button of the remote control 5 times continuously, the red indicator enters the fast flashing state, and then enters the network configuration mode. Operate the APP to add a device. If the network configuration is added successfully, it will automatically exit the mode. If the configuration fails after 180s, the device automatically exits the network configuration mode (You have to make sure the network is with good signal and repeat the operation from beginning).



3、Copy the fixed code 433.92Mhz remote control

• Copy operation process:

Put original remote control and WI-FI remote control as close as possible;

- (1) Copy: Press and hold the button to be copied from WI-FI remote control, the blue indicator of WI-FI remote control flashes once and then goes off (keep holding the WI-FI remote control button at this time), Meanwhile press the button of the original remote control wants to learn, if the button is successfully learned, the blue indicator will light up. And repeat the same process to the 1st ,2nd , 3rd and 4th button learning respectively;
- (2) Test: Press the buttons of WI-FI remote control separately, if the learning is successful, the indicator will be on and you press the button every time.

NOTE: It is only compatible with 433.92Mhz fixed code remote control ; After learning the buttons completed, if the USB remote control can not work, you can try to remove the code and then repeat the copy process.

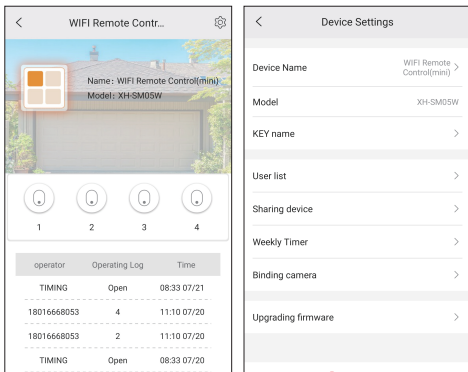
- Remove code operation process:

Remove code: Press and hold the 1st and 2nd buttons of WI-FI remote control at the same time for about 5 seconds, the blue indicator of WI-FI remote control flashes quickly, and the clear code is successful.

4、 Switch from copy mode to Giant rolling code

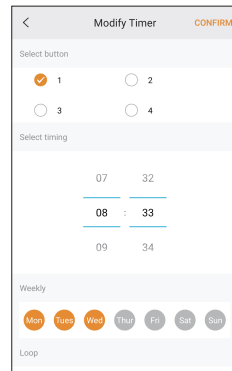
If you want to use this WI-FI remote control directly with Giant Auto gate system. You have to switch the device from copy mode to Giant rolling code. Press and release the 3rd button 6 times continuously, then wait for about 3 seconds, the blue indicator of WI-FI remote control flashes 6 times, you now have set the device to transmit with the Giant rolling code, you could directly use it working with Giant auto gate system.

5、 APP Setting page



6、 Timer control setting

- Cooperate with APP to set timing trigger, with one week as the cycle. Specifically, you can set the day of the week, hour, minute, 4 control buttons and control mode separately, up to 16 groups can be set.



7、 Sharing device

- Main user can open the APP, select the device you want to share, open the settings button in the top right corner of the device page, and click "Sharing device" to generate a QR code.
- The sub user you want to share the device has to open the APP and press "+" in the top right corner of the homepage, enter the adding device page, press the "scan code" image in the top right corner, select "scan code to share", and scan the QR code just generated from the APP of main user.

